

# coaxial valve

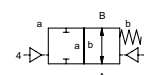
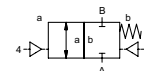
## type VSV-F 65

### 5-VSV-F 65

valve type with pilot valve



**2/2 way valve** externally controlled  
**pressure range** PN 0-40 bar  
**orifice** DN 65 mm  
**connection** flange  
**function** valve normally closed  
 symbol **NC**  
 valve normally open  
 symbol **NO**



**⚠** Above stated body materials refer to the valve port connections that get in contact with the media only!

**design** pressure balanced, with spring return  
**body materials** ① aluminium ② steel, galvanized  
 ③ ⑤ without non-ferr. metals  
 ④ steel, nickel plated ⑥ stainless steel  
**valve seat seal materials** synthetic resin on metal PTFE, FPM, CR, EPDM  
 NBR

**details needed for main valve**

- orifice
- port
- function NC/NO
- operating pressure
- flow rate
- media
- media temperature
- ambient temperature
- type of actuation

**details needed for pneumatic actuation**

- nominal voltage
- type of protection
- actuation pressure range min/max
- low wattage coil, actuation pressure range 4-7 bar
- pilot valve type

**details needed for hydraulic actuation**

- actuation pressure range min/max
- hydraulic control valve function

**⚠** The valves' technical design is based on media and application requirements. This can lead to deviations from the general specifications shown on the data sheet with regards to the design, sealing materials and characteristics.

**⚠** If order or application specifications are incomplete or imprecise there exists a risk of an incorrect technical design of the valve for the required application. As a consequence, the physical and / or chemical properties of the materials or seals used, may not be suitable for the intended application.

general specifications		options
ports	VSV-F flanges PN 16 / 40	special flanges
function	NC	NO
pressure range	bar 0-16 / 0-40	
Kv value	m³/h 68,0	
vacuum	leak rate < 10 <sup>-6</sup> mbar•l•s <sup>-1</sup>	
pressure-vacuum	P <sub>1</sub> ⇄ P <sub>2</sub>	pressure side max. 40 bar vacuum side leak rate upon request
back pressure	P <sub>2</sub> > P <sub>1</sub>	available (max. 16 bar)
media	gaseous - liquid - highly viscous - gelatinous - pasty - contaminated	
abrasive media		version available
damping	opening by throttles on pilot valve	
flow direction	A ⇄ B as marked	bi-directional upon request
switching cycles	1/min 50	
switching time	ms opening 200-3000 closing 200-3000	
media temperature	°C direct mounted pilot valve 60	remote mounted pilot valve outside temperature range of media max. 160 °C
ambient temperature	°C direct mounted pilot valve 50	
flush ports		available
leak ports		available
limit switches		inductive / mechanical upon request
manual override	via pilot valve	
approvals		LR/GL/WAZ
mounting		
weight	kg VSV-F 20,0	
additional equipment		upon request

electrical specifications		options
nominal voltage	U <sub>n</sub> DC 24 V	special voltage upon request
power consumption	U <sub>n</sub> AC 230 V 50 Hz	special voltage upon request
protection	DC 4,8 W	2,5 W
energized duty rating	AC pick up 11,0 VA holding 8,5 VA	
connection	IP65 (P54) acc. DIN 40050	
optional	ED 100%	
additional equipment	M12x1 connector acc. DESINA	connector acc. VDMA
max. temperature	illuminated plug with varistor	
explosion proof	media 60°C	
	ambient 50°C	
	E Ex e II T5 nominal voltage U <sub>n</sub>	DC 24 V 3,25 W
	power consumption	AC 230 V 50 Hz 2,90 W

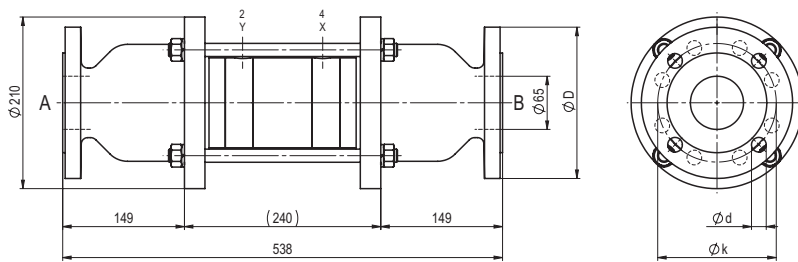
pneumatic specifications		options
actuation pressure range	bar 4-10	
air consumption	cm³/stroke 50	
cycle speed	main valve speed variable by throttles on pilot valve	
control	preferably 5/2 way pilot valve	
pilot valve interface		
actuator ports	2/4 G 1/4	G 3/8

hydraulic specifications		options
actuation pressure range	bar 10-30 / 30-60	
control	preferably 4/2 way control valve	
actuator ports	X/Y G 1/4	NPT 1/4
by media		upon request

■ specifications not highlighted are standard  
 ■ specifications highlighted in grey are optional

# type VSV-F 65

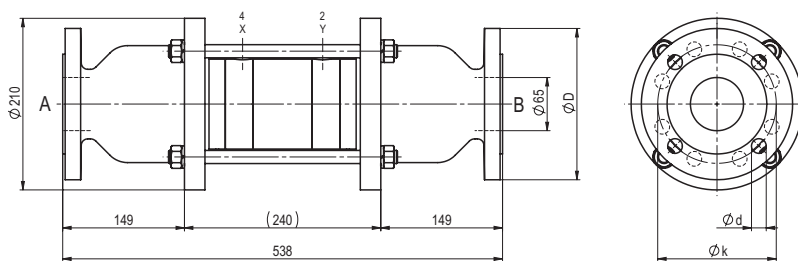
function: **NC**  
closed when not energized



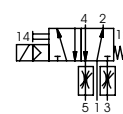
flanges PN	DIN	ØD	Øk	Ød
16	EN 1092-1	185	145	4x 18
40	EN 1092-1	185	145	8x 18

# type VSV-F 65

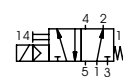
function: **NO**  
open when not energized



### pneumatic actuation



5/2 way pilot valve  
flow rate 700 l/min  
pressure range 3-10 bar G 1/8



5/2 way pilot valve ISO 1  
flow rate 700 l/min  
pressure range 3-10 bar G 1/4