



BS221DB

MEDIUM TO HEAVY
CAPACITY BELT SCALE



RICE LAKE[®]
WEIGHING SYSTEMS

www.ricelake.eu

BS221DB

MEDIUM TO HEAVY CAPACITY BELT SCALE

Belt scale model BS221DB is suitable for most belt widths, applications and constructions (with both idler stations and flat rollers).

The weighframe is designed to be mounted on the outside of the conveyor, so that a minimum of modifications on the conveyor are required.

The idler or weighing roller will be mounted on top of both arms. This model provides easy assembly and good accessibility for service.

This model can be used for approved applications and is also available for ATEX categories II2D and II3D (zone 21 and 22).



Standard Features

- Weighframe is mounted on outside of conveyor
- Minimum modification to conveyor are required
- Service friendly
- Friction-free pivot supports
- Two support beams
- Fits standard conveyors - mounts with four bolts per assembly

Weighframe, model BS221DB

- Construction:** Weighframe, originally designed for closed constructions, with friction free pivot supports and two support beams, which are mounted on each side of the belt conveyor construction.
- Mounting:** The weighframe fits in any kind of standard conveyor and is assembled in our factory to one piece, so it can be mounted with only 8 bolts into the conveyor.
- Material:** Steel St.37 / SS304
- Finishing:** Powder coating, colour RAL 3020 / Shot blasting SA 2.5
According to procedure:
- Shot blasting SA 2.5
 - One layer epoxy powder coating, weather proof type
 - Thickness minimum 80 µm

Load cells, Single-Ended Beam

- Type load cell:** Single-ended beam force transducer
- Construction:** Hermetically sealed, IP68
- Material:** SS

Junctionbox, model JBW

- The Junctionbox is placed near the weighframe.
- Dimensions:** 180 x 110 x 90 mm (L x W x H)
- Material:** Reinforced polycarbonate, impact proof
- Protection:** IP66
- Load cells:** 2 pieces (4- of 6-wires)
- Speed pickup:** yes (2- or 3-wires)

Speed Pick-Up, model SPU 5020 / 5826

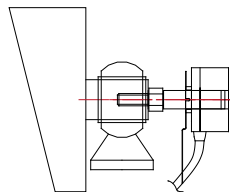
This digital speed pickup is mounted directly on the axle end of the none driven drum.

- Housing:** Aluminium / SS304, IP66

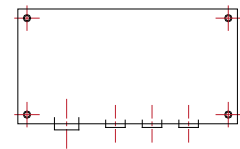
Electronics

See applicable datasheet.

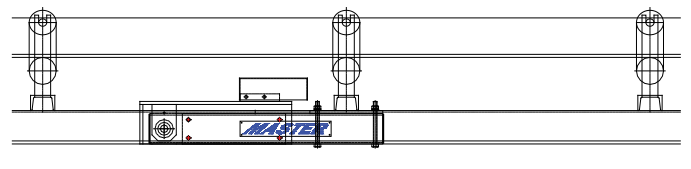
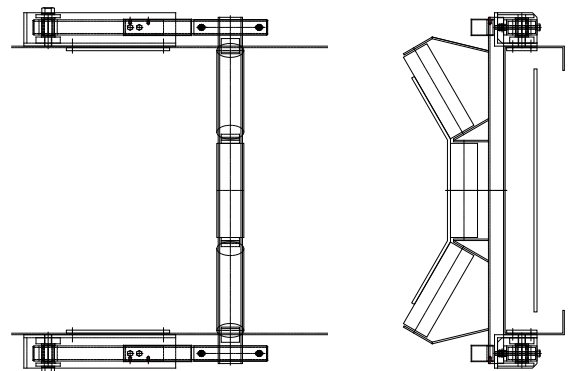
SPEED PICKUP



JUNCTION BOX



WEIGHFRAME WITH LOADCELL



Your Rice Lake Weighing Systems distributor is:

RICE LAKE
WEIGHING SYSTEMS

Rice Lake Weighing Systems Europe B.V.
Weiland 11 • NL-6666 MH Heteren • The Netherlands
TEL: +31 (0) 26 472 1319 • FAX: +31 (0) 88 234 9100 • www.ricelake.eu

An ISO 9001 registered company © 2014 Rice Lake Weighing Systems PN 165948 8/15
Specifications subject to change without notice.