

# coaxial valve

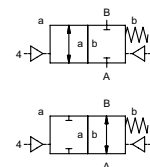
## type CFM 08

### 3-CFM 08

valve type with pilot valve



**2/2 way valve** externally controlled  
**pressure range** PN 0-40 bar  
**orifice** DN 8 mm  
**connection** thread  
**function** valve normally closed symbol **NC**  
 valve normally open symbol **NO**



**⚠** Above stated body materials refer to the valve port connections that get in contact with the media only!

**design** pressure balanced, with spring return  
**body materials** ① brass ②  
 ③ ⑤  
 ④ ⑥  
**valve seat** synthetic resin on metal  
**seal materials** NBR, FPM, PE **PU, PTFE**

**details needed for main valve**

- orifice
- port
- function NC/NO
- operating pressure
- flow rate
- media
- media temperature
- ambient temperature
- type of actuation

**details needed for pneumatic actuation**

- nominal voltage
- type of protection
- actuation pressure range min/max
- low wattage coil, actuation pressure range 4-7 bar
- pilot valve type

**⚠** The valves' technical design is based on media and application requirements. This can lead to deviations from the general specifications shown on the data sheet with regards to the design, sealing materials and characteristics.

**⚠** If order or application specifications are incomplete or imprecise there exists a risk of an incorrect technical design of the valve for the required application. As a consequence, the physical and / or chemical properties of the materials or seals used, may not be suitable for the intended application.

■ specifications not highlighted are standard  
 specifications highlighted in grey are optional

**general specifications**

**options**

ports	CFM	threads G 3/8	
function	NC		NO
pressure range	bar	0-40	
Kv value	m <sup>3</sup> /h	1,6	
vacuum	leak rate		< 10 <sup>-6</sup> mbar•l•s <sup>-1</sup>
pressure-vacuum	P <sub>1</sub> ⇄ P <sub>2</sub>		
back pressure	P <sub>2</sub> > P <sub>1</sub>		available (max. 16 bar)
media	emulsions - oils - neutral gases		other medias upon request
abrasive media			
damping	opening		
	closing		
flow direction	A ⇄ B	as marked	
switching cycles	1/min	400	
switching time	ms	opening 70 closing 80	
media temperature	°C	direct mounted pilot valve 60	> 60 °C upon request
ambient temperature	°C	direct mounted pilot valve 50	> 50 °C upon request
flush ports			
leak ports			
limit switches			temperature range max 70 °C
manual override		via pilot valve	
approvals			
mounting			mounting brackets
weight	kg	0,3	
additional equipment			

**electrical specifications**

**options**

nominal voltage	U <sub>n</sub>	DC 24 V	special voltage upon request
		AC 230 V 50 Hz	special voltage upon request
power consumption	DC	4,8 W	2,5 W
	AC	pick up 11,0 VA holding 8,5 VA	
protection	IP65 (P54)	acc. DIN 40050	
energized duty rating	ED	100%	
connection		plug acc. DIN EN 175301-803 form B, 4 positions x90° / wire diameter 6-8 mm	
optional	M12x1	connector acc. DESINA	connector acc. VDMA
additional equipment		illuminated plug with varistor	
max. temperature	media	60°C	
	ambient	50°C	
explosion proof	E Ex e II T5	nominal voltage U <sub>n</sub>	DC 24 V 3,25 W
		power consumption	AC 230 V 50 Hz 2,90 W

**pneumatic specifications**

**options**

actuation pressure range	bar	4-10	
air consumption	cm <sup>3</sup> /stroke	1,2	
cycle speed			
control		via 3/2 way pilot valve	
pilot valve interface		co-ax	CNOMO upon request
actuator ports	2/4	G 1/8	

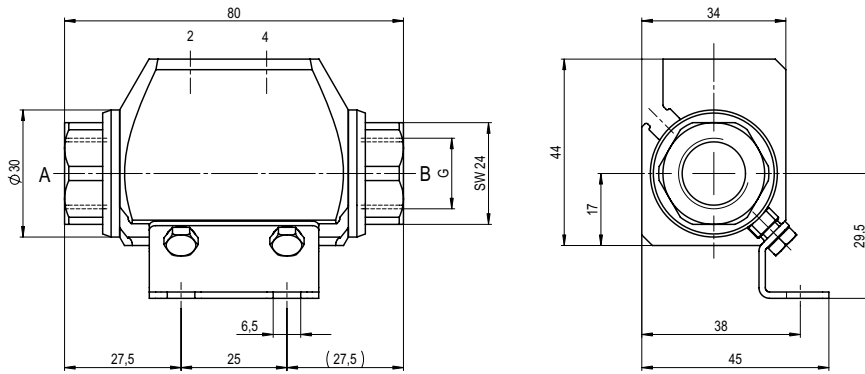
**hydraulic specifications**

**options**

actuation pressure range			
control			
actuator ports			
by media			

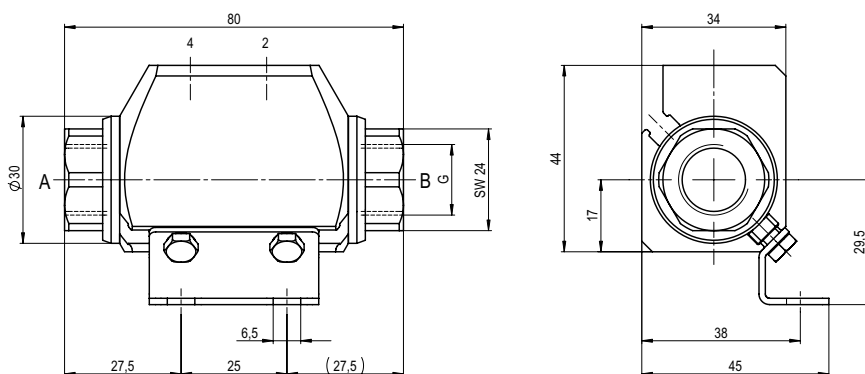
# type CFM 08

function: **NC**  
closed when not energized

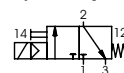


# type CFM 08

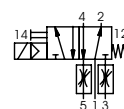
function: **NO**  
open when not energized



## pneumatic actuation (5/2 separately)



3/2-way-pilot valve  
flow rate 60 l/min  
pressure range 3-10 bar



5/2 way pilot valve  
flow rate 700 l/min  
pressure range 3-10 bar G 1/8