

5-VMK 25
5-VFK 25

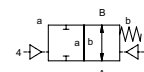
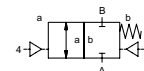
valve type with pilot valve

coaxial valve

type VMK 25 VFK 25



2/2 way valve externally controlled
pressure range PN 0-100 bar
orifice DN 25 mm
connection thread/flange
function valve normally closed
 symbol **NC**
 valve normally open
 symbol **NO**



⚠ Above stated body materials refer to the valve port connections that get in contact with the media only!

design pressure balanced, with spring return
body materials ① brass ② steel, galvanized
 ③ brass, nickel plated ⑤ without non-ferr. metals
 ④ steel, nickel plated ⑥ stainless steel
valve seat seal materials synthetic resin on metal
 NBR PTFE, FPM, CR, EPDM

details needed for main valve

- orifice
- port
- function NC/NO
- operating pressure
- flow rate
- media
- media temperature
- ambient temperature
- type of actuation

details needed for pneumatic actuation

- nominal voltage
- type of protection
- actuation pressure range min/max
- low wattage coil, actuation pressure range 4-7 bar
- pilot valve type

details needed for hydraulic actuation

- actuation pressure range min/max
- hydraulic control valve function

⚠ The valves' technical design is based on media and application requirements. This can lead to deviations from the general specifications shown on the data sheet with regards to the design, sealing materials and characteristics.

⚠ If order or application specifications are incomplete or imprecise there exists a risk of an incorrect technical design of the valve for the required application. As a consequence, the physical and / or chemical properties of the materials or seals used, may not be suitable for the intended application.

general specifications		options
ports	VMK threads G 1 - G 1 1/2 VFK flanges PN 16 / 40 / 100	special threads special flanges
function	NC	NO
pressure range	bar 0-16 / 0-40 / 0-64 / 0-100	> 100 bar upon request
Kv value	m³/h 13,3	
leak rate		< 10 ⁻⁶ mbar•l•s ⁻¹
vacuum		pressure side max. 100 bar vacuum side leak rate upon request
pressure-vacuum	P ₁ ⇄ P ₂	available (max. 16 bar)
back pressure	P ₂ > P ₁	
media	gaseous - liquid - highly viscous - gelatinous - pasty - contaminated	
abrasive media		version available
damping	opening closing by throttles on pilot valve	
flow direction	A ⇄ B as marked	bi-directional upon request
switching cycles	1/min 200	
switching time	ms opening 50-3000 closing 50-3000	
media temperature	°C direct mounted pilot valve 60	remote mounted pilot valve outside temper- atur range of media max. 160 °C
ambient temperature	°C direct mounted pilot valve 50	
flush ports		available
leak ports		available
limit switches		inductive / mechanical upon request
manual override	via pilot valve	
approvals		LR/GL/WAZ
mounting		mounting brackets
weight	kg VMK 6,7 VFK 9,0	
additional equipment		upon request

electrical specifications		options
nominal voltage	U _n DC 24 V AC 230 V 50 Hz	special voltage upon request
power consumption	DC 4,8 W AC pick up 11,0 VA holding 8,5 VA	special voltage upon request 2,5 W
protection	IP65 (P54) acc. DIN 40050	
energized duty rating	ED 100%	
connection	plug acc. DIN EN 175301-803 form B, 4 positions x90° / wire diameter 6-8 mm	
optional	M12x1 connector acc. DESINA	connector acc. VDMA
additional equipment	illuminated plug with varistor	
max. temperature	media 60°C ambient 50°C	
explosion proof	E Ex e II T5 nominal voltage U _n power consumption	DC 24 V 3,25 W AC 230 V 50 Hz 2,90 W

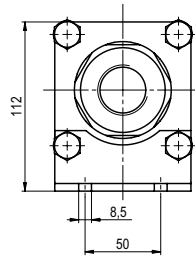
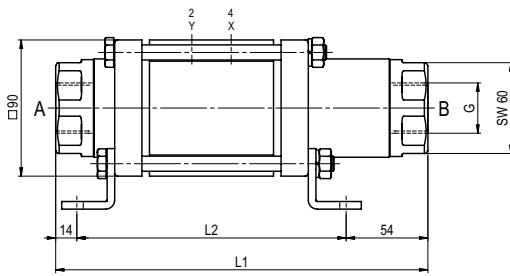
pneumatic specifications		options
actuation pressure range	bar 4-10	
air consumption	cm³/stroke 18	
cycle speed		main valve speed variable by throttles on pilot valve preferably 5/2 way pilot valve
control		
pilot valve interface	co-ax / Namur	ISO 1
actuator ports	2/4 G 1/8	G 1/4

hydraulic specifications		options
actuation pressure range	bar 10-30 / 30-60	
control		preferably 4/2 way control valve
actuator ports	X/Y G 1/4	NPT 1/4
by media		

■ specifications not highlighted are standard
 specifications highlighted in grey are optional

type VMK 25

function: **NC**
closed when not energized

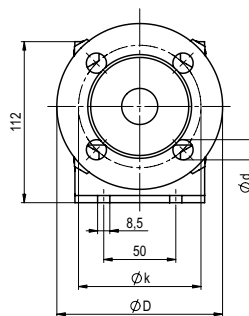
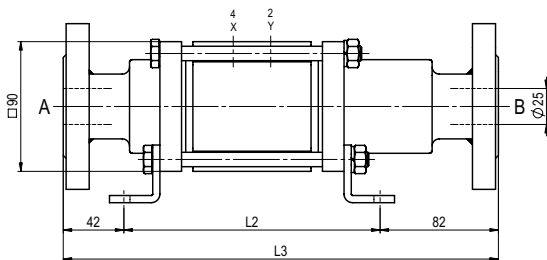


constructive length	L1	L2	L3
standard	246	178	302
with 1/2 inductive limit switches	260	192	316
with force-feed lubrication nipple	276	208	332
with mechanical limit switches	270	202	326

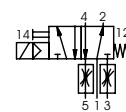
flanges PN	DIN	ØD	Øk	Ød
16	EN 1092-1	115	85	14
40	EN 1092-1	115	85	14
100	EN 1092-1	140	100	18

type VFK 25

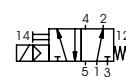
function: **NO**
open when not energized



pneumatic actuation



5/2 way pilot valve
flow rate 700 l/min
pressure range 3-10 bar G 1/8



5/2 way pilot valve ISO 1
flow rate 700 l/min
pressure range 3-10 bar G 1/4