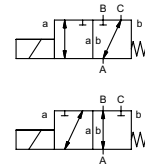



# coaxial valve

## type FK 80 DR



**3/2 way valve**  
**pressure range** PN 0-16 bar  
**orifice** DN 80 mm  
**connection** flange  
**function** valve  
 normally closed (A ► B)  
 symbol **NC**  
 valve  
 normally open (A ► B)  
 symbol **NO**



 Above stated body materials refer to the valve port connections that get in contact with the media only!

**design** pressure balanced, with spring return, switching overlap  
**body materials** ① aluminium ② steel, galvanized  
 ③ ⑤  
 ④ steel, nickel plated ⑥ stainless steel  
**valve seat** synthetic resin on metal  
**seal materials** NBR PTFE, FPM, EPDM

### details needed

- orifice
- port
- function NC/NO
- operating pressure
- inlet pressure at A, B or C
- flow rate
- media
- media temperature
- ambient temperature
- nominal voltage

### general specifications


### options


ports	FK	flanges PN 16	special flanges
function	NC	NO	
pressure range	bar	0-16	
		A ⇒ B max. 16 / B ⇒ A max. 5 / A ⇒ C max. 16 / C ⇒ A max. 16	
Kv value	m³/h	55,0	
vacuum	leak rate		< 10 <sup>-4</sup> mbar·l·s <sup>-1</sup>
pressure-vacuum	P <sub>1</sub> ⇌ P <sub>2</sub>		upon request
back pressure	P <sub>2</sub> > P <sub>1</sub>	see pressure range	
media		gaseous - liquid - highly viscous - gelatinous - contaminated	
abrasive media			upon request
damping	opening		
	closing		
flow direction		see pressure range	
switching cycles	1/min	20	
switching time	ms	opening 600 closing 800	
media temperature	°C	DC: -20 to +80	
		AC: -20 to +80	
ambient temperature	°C	DC: -20 to +80	
		AC: -20 to +80	
limit switches			inductive
manual override			
approvals			LR/GL/WAZ
mounting			
weight	kg	FK 48,8	
additional equipment			upon request

### electrical specifications

### options

nominal voltage	U <sub>n</sub>	DC 24 V	special voltage upon request
	U <sub>n</sub>	AC 230 V 40-60 Hz	special voltage upon request
actuation	DC	direct-current magnet	
	AC	direct-current magnet with integrated rectifier	
insulating rating	H	180°C	
protection	IP65		
energized duty rating	ED	100%	
connection		plug acc. DIN EN 175301-803 form A, 4 positions x90° / wire diameter 6-8 mm	terminal box M16x1,5
optional		illuminated plug with varistor	
additional equipment	N-coil	DC 24 V 4,40 A	
		AC 230 V 40-60 Hz 0,65 A	
current consumption	H-coil		
			AC 230 V 40-60 Hz 0,79 A
explosion proof			
limit switches		inductive (I)	normally open-PNP
		inductive (B)	normally open-PNP

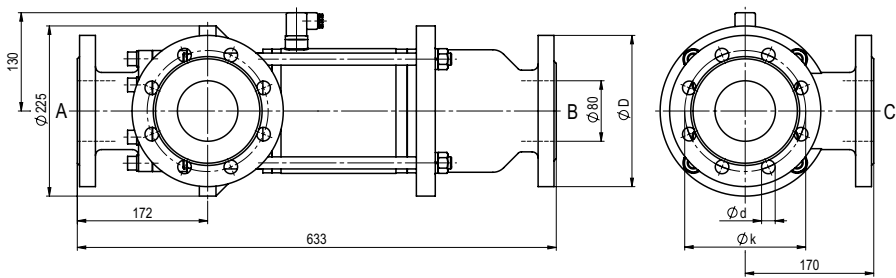
 The valves' technical design is based on media and application requirements. This can lead to deviations from the general specifications shown on the data sheet with regards to the design, sealing materials and characteristics.

 If order or application specifications are incomplete or imprecise there exists a risk of an incorrect technical design of the valve for the required application. As a consequence, the physical and / or chemical properties of the materials or seals used, may not be suitable for the intended application.

■ specifications not highlighted are standard  
 ■ specifications highlighted in grey are optional

type **FK 80 DR**

function: **NC**  
closed when not energized (A ►B)



flanges PN	DIN	$\varnothing D$	$\varnothing k$	$\varnothing d$
16	EN 1092-1	200	160	18

type **FK 80 DR**

function: **NO**  
open when not energized (A ►B)

