

## 5-VMK-H 15

## 5-VFK-H 15

valve type with pilot valve

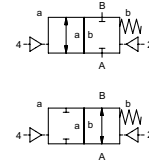
# coaxial valve


## type VMK-H 15

## VFK-H 15



2/2 way valve externally controlled  
 pressure range PN 0-200 bar  
 orifice DN 15 mm  
 connection thread/flange  
 function valve  
 normally closed symbol **NC**  
 valve normally open  
 symbol **NO**



 Above stated body materials refer to the valve port connections that get in contact with the media only!

**design** pressure balanced, with spring return  
**body materials** ① ② steel, galvanized  
 ③ ⑤ without non-ferr. metals  
 ④ steel, nickel plated ⑥ stainless steel  
**valve seat** synthetic resin on metal  
**seal materials** NBR PTFE, FPM, CR, EPDM

## details needed for main valve


- orifice
- port
- function NC/NO
- operating pressure
- flow rate
- media
- media temperature
- ambient temperature
- type of actuation


## details needed for pneumatic actuation

- nominal voltage
- type of protection
- actuation pressure range min/max
- low wattage coil, actuation pressure range 4-7 bar
- pilot valve type

## details needed for hydraulic actuation

- actuation pressure range min/max
- hydraulic control valve function

 The valves' technical design is based on media and application requirements. This can lead to deviations from the general specifications shown on the data sheet with regards to the design, sealing materials and characteristics.

 If order or application specifications are incomplete or imprecise there exists a risk of an incorrect technical design of the valve for the required application. As a consequence, the physical and / or chemical properties of the materials or seals used, may not be suitable for the intended application.

general specifications		options
ports	VMK-H threads G 1/2	special threads
	VFK-H flanges PN 160 / 250	special flanges
function	NC	NO
pressure range	bar 0-200	
Kv value	m³/h 5,6	
vacuum	leak rate	< 10 <sup>-6</sup> mbar·l·s <sup>-1</sup>
pressure-vacuum	P <sub>1</sub> ⇌ P <sub>2</sub>	pressure side max. 200 bar
		vacuum side leak rate upon request
back pressure	P <sub>2</sub> > P <sub>1</sub>	available (max. 16 bar)
media	gaseous - liquid - highly viscous - gelatinous - pasty - contaminated	
abrasive media		version available
damping	opening	
	closing by throttles on pilot valve	
flow direction	A ⇌ B as marked	bi-directional upon request
switching cycles	1/min 200	
switching time	ms opening 50-3000 closing 50-3000	
media temperature	°C direct mounted pilot valve 60	remote mounted pilot valve outside tempera-
ambient temperature	°C direct mounted pilot valve 50	ture range of media max. 160 °C
flush ports		available
leak ports		available
limit switches		inductive / mechanical upon request
manual override	via pilot valve	
approvals		LR/GL/WAZ
mounting		mounting brackets
weight	kg VMK-H 5,3 VFK-H 7,1	
additional equipment		upon request

electrical specifications		options
nominal voltage	U <sub>n</sub> DC 24 V	special voltage upon request
	U <sub>n</sub> AC 230 V 50 Hz	special voltage upon request
power consumption	DC 4,8 W	2,5 W
	AC pick up 11,0 VA holding 8,5 VA	
protection	IP65 (P54) acc. DIN 40050	
energized duty rating	ED 100%	
connection	plug acc. DIN EN 175301-803 form B, 4 positions x90° / wire diameter 6-8 mm	
optional	M12x1 connector acc. DESINA	connector acc. VDMA
additional equipment	illuminated plug with varistor	
max. temperature	media 60°C	
	ambient 50°C	
explosion proof	E Ex e II T5 nominal voltage U <sub>n</sub>	DC 24 V 3,25 W
	power consumption	AC 230 V 50 Hz 2,90 W

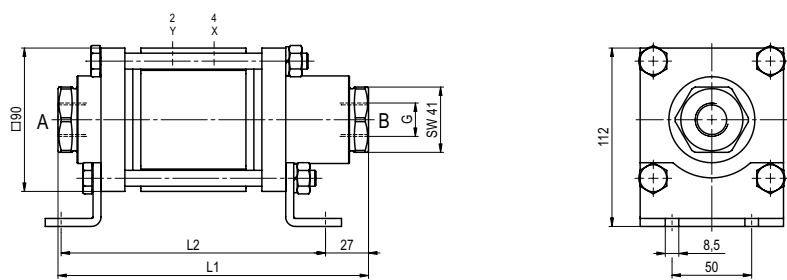
pneumatic specifications		options
actuation pressure range	bar 4-10	
air consumption	cm³/stroke 24	
cycle speed		main valve speed variable by throttleson pilot valve
control		preferably 5/2 way pilot valve
pilot valve interface	co-ax / Namur	ISO 1
actuator ports	2/4 G 1/8	G 1/4

hydraulic specifications		options
actuation pressure range	bar 10-30 / 30-60	
control	preferably 4/2 way control valve	
actuator ports	X/Y G 1/4	NPT 1/4
by media		

■ specifications not highlighted are standard  
 ■ specifications highlighted in grey are optional

type **VMK-H 15**

function: **NC**  
closed when not energized

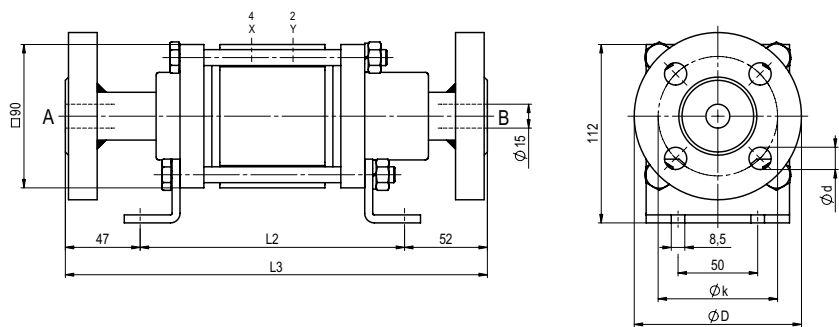


constructive length	L1	L2	L3
standard	195	166	265
with 1/2 inductive limit switches	225	196	295
with force-feed lubrication nipple	225	196	295
with mechanical limit switches	225	196	295

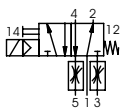
flanges PN	DIN	ØD	Øk	Ød
160	EN 1092-1	105	75	14
250	EN 1092-1	130	90	18

type **VFK-H 15**

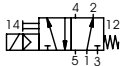
function: **NO**  
open when not energized



pneumatic actuation



5/2 way pilot valve  
flow rate 700 l/min  
pressure range 3-10 bar G 1/8



5/2 way pilot valve ISO 1  
flow rate 700 l/min  
pressure range 3-10 bar G 1/4