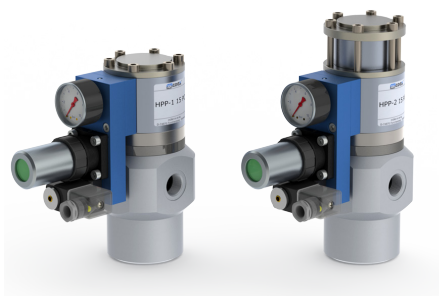


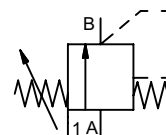
**3-HPP-1 15 PC**  
**3-HPP-2 15 PC**  
 valve type with pilot valve

# pressure reduction valve

## type **HPP-1 15 PC** **HPP-2 15 PC**



**control valve manual** externally controlled  
**pressure range** PN 0-80 bar  
**orifice** DN 15 mm  
**connection** thread/cartridge  
**function** manual stepless pressure regulation



**⚠** Above stated body materials refer to the valve port connections that get in contact with the media only!

**design** externally controlled with spring return  
**body materials** ① aluminium ③  
 ① brass ④  
 ② ⑥ stainless steel  
**valve seat** synthetic resin on metal / metal on metal  
**seal materials** EPDM, PU, HNBR **FPM**

**details needed for main valve**

- orifice
- port
- pressure regulating range
- flow rate
- media
- media temperature
- ambient temperature

**details needed for pneumatic actuation**

- nominal voltage
- type of protection
- actuation pressure range min/max

general specifications		options
<b>ports</b>	HPP-1 with valve body thread G 1/2 - G 3/4 HPP-2 with valve body thread G 1/2 - G 3/4	without valve body without valve body
<b>function</b>	stepless regulation	
<b>pressure regulation range</b>	bar HPP-1 5-40	HPP-2 5-80
<b>flow rate</b>	m³/h max. 6,0	
<b>media</b>	gaseous - liquid - highly viscous - contaminated	
<b>abrasive media</b>		version available
<b>flow direction</b>	A ⇌ B as marked	
<b>settling time</b>	ms < 200	
<b>media temperature</b>	°C 0 to +60	
<b>ambient temperature</b>	°C 0 to +50	
<b>approvals</b>		WAZ
<b>mounting</b>		mounting holes
<b>weight</b>	kg HPP-1 3,8 HPP-2 4,1	HPP-1 2,7 HPP-2 3,0
<b>additional equipment</b>		

electrical specifications		options
<b>nominal voltage</b>	U <sub>n</sub> DC 24 V	special voltage upon request
	U <sub>n</sub> AC 230 V 50 Hz	special voltage upon request
<b>power consumption</b>	DC 4,8 W	2,5 W
	AC pick up 11,0 VA holding 8,5 VA	
<b>protection</b>	IP65 (P54) acc. DIN 40050	
<b>energized duty rating</b>	ED 100%	
<b>connection</b>	plug acc. DIN EN 175301-803 form B, 3 positions x90° / wire diameter 6-8 mm	
<b>optional</b>	M12x1 connector acc. DESINA	connector acc. VDMA
<b>additional equipment</b>	illuminated plug with varistor	
<b>max. temperature</b>	media 60°C	
	ambient 50°C	
<b>explosion proof</b>	E Ex e II T5 nominal voltage U <sub>n</sub>	DC 24 V 3,25 W
	power consumption	AC 230 V 50 Hz 2,90 W

pneumatic specifications		options
<b>actuation pressure range</b>	bar see actuation pressure-diagram	
<b>compressed air</b>	DIN ISO 8573-1 grade of compressed air quality 5/4/3	
<b>control</b>	preferably 3/2 way pilot valve during low pressure circulation mode	
<b>actuator ports</b>	1 G 1/8	

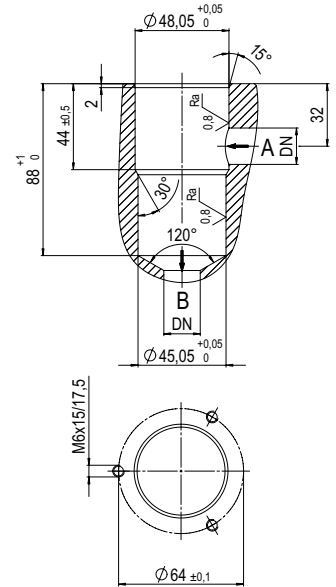
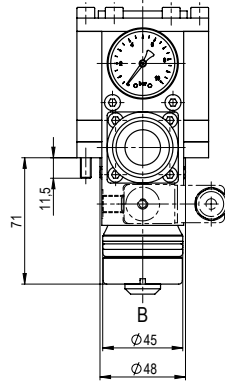
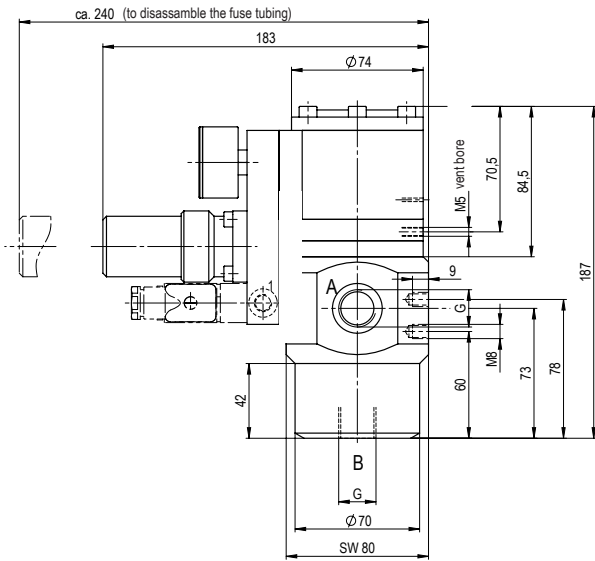
**⚠** The valves' technical design is based on media and application requirements. This can lead to deviations from the general specifications shown on the data sheet with regards to the design, sealing materials and characteristics.

**⚠** If order or application specifications are incomplete or imprecise there exists a risk of an incorrect technical design of the valve for the required application. As a consequence, the physical and / or chemical properties of the materials or seals used, may not be suitable for the intended application.

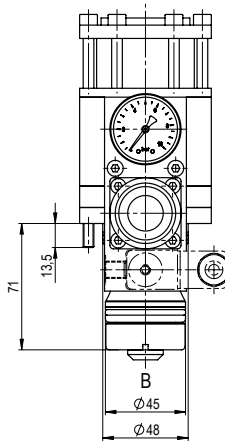
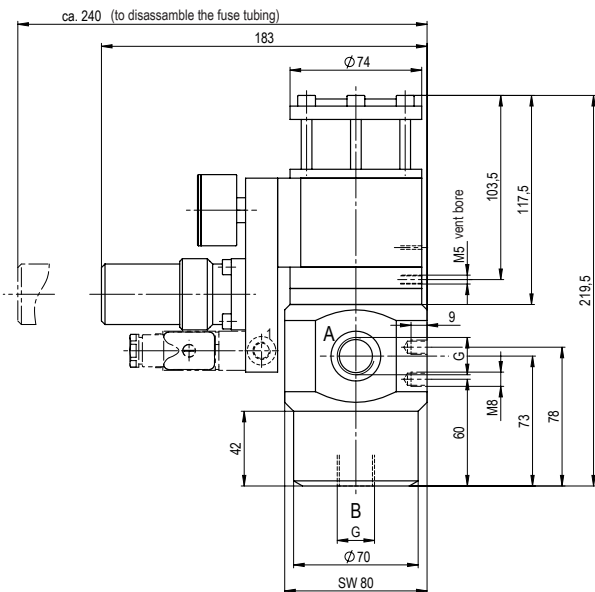
■ specifications not highlighted are standard  
 ■ specifications highlighted in grey are optional

# type HPP-1 15 PC

## drilling design for cartridge



# type HPP-2 15 PC



## actuation pressure-diagram

