

lateral valve

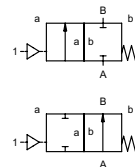
type LVP 06

3-LVP 06

valve type with pilot valve



2/2 way valve externally controlled
pressure range PN 0-500 bar
orifice DN 6 mm
connection thread
function valve normally closed symbol **NC**
 valve normally open symbol **NO**



⚠ Above stated body materials refer to the valve port connections that get in contact with the media only!

design externally controlled with spring return
body materials ① brass ②
 ③ ⑤
 ④ ⑥
valve seat monel on brass
seal materials EPDM, NBR **FPM**

details needed for main valve

- orifice
- port
- function NC/NO
- operating pressure/Δp
- flow rate
- media
- media temperature
- ambient temperature
- type of actuation

details needed for pneumatic actuation

- nominal voltage
- type of protection
- actuation pressure range min/max
- low wattage coil, actuation pressure range 4-7 bar
- pilot valve type

⚠ The valves' technical design is based on media and application requirements. This can lead to deviations from the general specifications shown on the data sheet with regards to the design, sealing materials and characteristics.

⚠ If order or application specifications are incomplete or imprecise there exists a risk of an incorrect technical design of the valve for the required application. As a consequence, the physical and / or chemical properties of the materials or seals used, may not be suitable for the intended application.

■ specifications not highlighted are standard
 specifications highlighted in grey are optional

general specifications

options

ports	LVP	threads G 1/4	
function	NC		NO
pressure range	bar	0-500	
Kv value	l/min	7	
vacuum	leak rate	< 10 ⁻⁶ mbar·l·s ⁻¹	
pressure-vacuum	P1 ⇌ P2	pressure side max. 500 bar vacuum side leak rate upon request	
back pressure	P2 > P1		available (max. 16 bar)
media		gaseous	
abrasive media			
damping	opening		
	closing		
flow direction	A ⇌ B	as marked	
switching cycles	1/min	300	
switching time	ms	opening 100-3000 closing 100-3000	
media temperature	°C	-20 to +80	
ambient temperature	°C	-20 to +80	
flush ports			
leak ports			
limit switches			inductive via adapter
manual override			via 3/2 way pilot valve
approvals			
mounting		mounting holes on valve body	
weight	kg	2,2	
additional equipment			adapter

electrical specifications

options

nominal voltage	
power consumption	
protection	
energized duty rating	
connection	
optional	
additional equipment	
max. temperature	
explosion proof	

pneumatic specifications

options

actuation pressure range	bar	7
air consumption	cm ³ /stroke	6,5
cycle speed		main valve speed variable by throttleson pilot valve via 3/2 way pilot valve
control		
pilot valve interface		
actuator ports	2/4	M 5

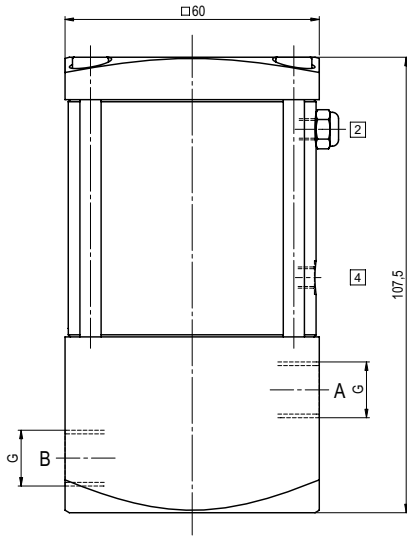
hydraulic specifications

options

actuation pressure range	
control	
actuator ports	
by media	

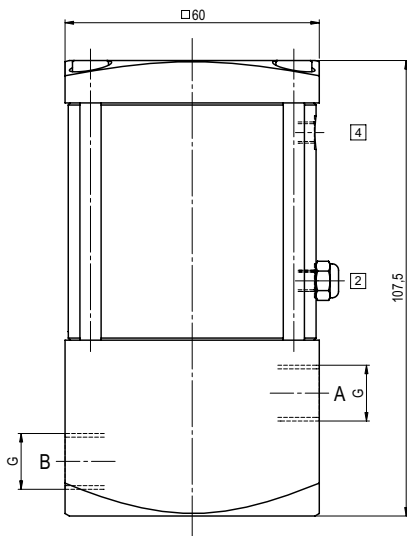
type LVP 06

function: **NC**
closed when not energized

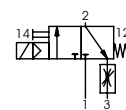


type LVP 06

function: **NO**
open when not energized



pneumatic actuation (separately)



3/2-way-pilot valve
flow rate 60 l/min
pressure range 3-10 bar