

5-PCD 10 DR

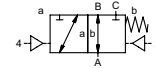
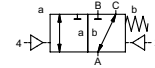
valve type with pilot valve


lateral valve

type PCD 10 DR



3/2 way valve externally controlled
pressure range PN 0-250 bar
orifice DN 10 mm
connection thread
function valve
 normally closed (A ► B)
 symbol **NC**
 valve
 normally open (A ► B)
 symbol **NO**



 Above stated body materials refer to the valve port connections that get in contact with the media only!

design pressure balanced, with spring return, switching overlap

body materials ① brass ③
 ③ ⑤
 ④ ⑥ stainless steel

valve seat synthetic resin on metal
seal materials NBR


PTFE, FPM, CR, EPDM


details needed for main valve

- orifice
- port
- function NC/NO
- operating pressure/Δp
- inlet pressure at A, B or C
- flow rate
- media
- media temperature
- ambient temperature
- type of actuation

details needed for pneumatic actuation

- nominal voltage
- type of protection
- actuation pressure range min/max
- low wattage coil, actuation pressure range 4-7 bar
- pilot valve type

 The valves' technical design is based on media and application requirements. This can lead to deviations from the general specifications shown on the data sheet with regards to the design, sealing materials and characteristics.

 If order or application specifications are incomplete or imprecise there exists a risk of an incorrect technical design of the valve for the required application. As a consequence, the physical and / or chemical properties of the materials or seals used, may not be suitable for the intended application.

general specifications**options**

ports	PCD	threads G 3/8	
function	NC		NO
pressure range	bar	0-250	
Kv value	m³/h	1,5	
vacuum	leak rate		
pressure-vacuum	P1 ⇄ P2		
back pressure	P2 > P1		
media		gaseous - liquid	
abrasive media			
damping	opening		
	closing		
flow direction		see pressure range	
switching cycles	1/min	130	
switching time	ms	opening 30-3000 closing 30-3000	
media temperature	°C	direct mounted pilot valve 60	remote mounted pilot valve outside temperature range of media max. 150 °C
ambient temperature	°C	direct mounted pilot valve 50	
flush ports			
leak ports			
limit switches			inductive
manual override			
approvals			
mounting			
weight	kg	3,5	
additional equipment			

electrical specifications**options**

nominal voltage	U _n	DC 24 V	special voltage upon request
	U _n	AC 230 V 50 Hz	special voltage upon request
power consumption	DC	4,8 W	2,5 W
	AC	pick up 11,0 VA holding 8,5 VA	
protection	IP65 (P54)	acc. DIN 40050	
energized duty rating	ED	100%	
connection		plug acc. DIN EN 175301-803 form B, 4 positions x90° / wire diameter 6-8 mm	
optional	M12x1	connector acc. DESINA	connector acc. VDMA
additional equipment		illuminated plug with varistor	
max. temperature	media	60°C	
	ambient	50°C	
explosion proof	E Ex e II T5	nominal voltage U _n	DC 24 V 3,25 W
		power consumption	AC 230 V 50 Hz 2,90 W

pneumatic specifications**options**

actuation pressure range	bar	4-10	
air consumption	cm³/stroke	7	
cycle speed		main valve speed variable by throttleson pilot valve	
control		preferably 5/2 way pilot valve	
pilot valve interface			
actuator ports	2/4	G 1/8	

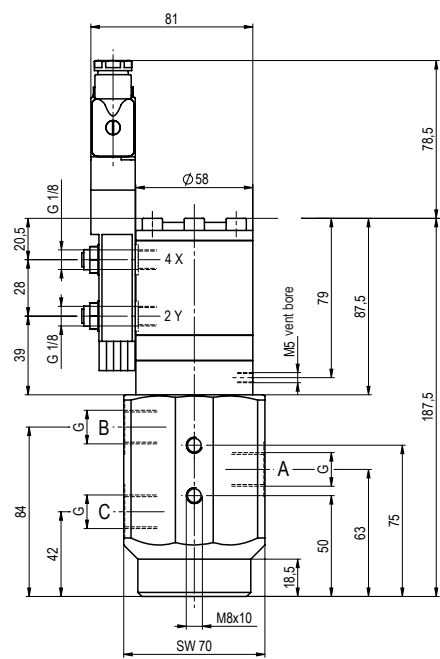
hydraulic specifications**options**

actuation pressure range			
control			
actuator ports			
by media			

■ specifications not highlighted are standard
 ■ specifications highlighted in grey are optional

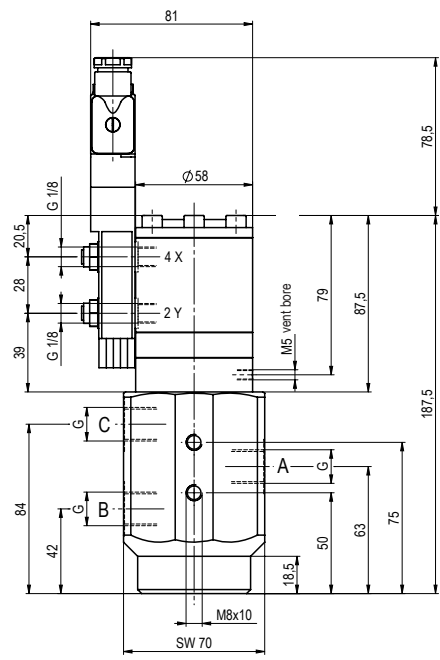
type **PCD 10 DR**

function: **NC**
closed when not energized (A ► B)

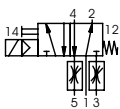


type **PCD 10 DR**

function: **NO**
open when not energized (A ► B)



pneumatic actuation



5/2 way pilot valve
flow rate 350 l/min
pressure range 3-10 bar G 1/8