

lateral valve

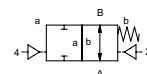
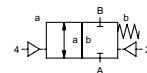
type PCD-H 15


5-PCD-H 15

valve type with pilot valve



2/2 way valve
pressure range PN 0-500 bar
orifice DN 15 mm
connection thread
function valve
 normally closed
 symbol **NC**
 valve
 normally open
 symbol **NO**



 Above stated body materials refer to the valve port connections that get in contact with the media only!

design pressure balanced, with spring return

body materials ① brass ③
 ③ ⑤
 ④ ⑥ stainless steel

valve seat synthetic resin on metal
seal materials NBR


PTFE, FPM, CR, EPDM


details needed for main valve

- orifice
- port
- function NC/NO
- operating pressure/Δp
- flow rate
- media
- media temperature
- ambient temperature
- type of actuation

details needed for pneumatic actuation

- nominal voltage
- type of protection
- actuation pressure range min/max
- low wattage coil, actuation pressure range 4-7 bar
- pilot valve type

 The valves' technical design is based on media and application requirements. This can lead to deviations from the general specifications shown on the data sheet with regards to the design, sealing materials and characteristics.

 If order or application specifications are incomplete or imprecise there exists a risk of an incorrect technical design of the valve for the required application. As a consequence, the physical and / or chemical properties of the materials or seals used, may not be suitable for the intended application.

general specifications

options

ports	PCD-H	threads G 1/2 - G 3/4
function	NC	NO
pressure range	bar	0-500
Kv value	m³/h	3,5
vacuum	leak rate	
pressure-vacuum	P1 ⇌ P2	
back pressure	P2 > P1	
media		gaseous - liquid
abrasive media		
damping	opening	
	closing	
flow direction	A ⇌ B	see pressure range
switching cycles	1/min	100
switching time	ms	opening 30-3000 closing 30-3000
media temperature	°C	direct mounted pilot valve 60
ambient temperature	°C	direct mounted pilot valve 50
flush ports		
leak ports		
limit switches		inductive
manual override		
approvals		
mounting		
weight	kg	17,5
additional equipment		

electrical specifications

options

nominal voltage	U _n	DC 24 V	special voltage upon request
	U _n	AC 230 V 50 Hz	special voltage upon request
power consumption	DC	4,8 W	2,5 W
	AC	pick up 11,0 VA holding 8,5 VA	
protection	IP65 (P54)	acc. DIN 40050	
energized duty rating	ED	100%	
connection		plug acc. DIN EN 175301-803 form B, 4 positions x90° / wire diameter 6-8 mm	
optional	M12x1	connector acc. DESINA	connector acc. VDMA
additional equipment		illuminated plug with varistor	
max. temperature	media	60°C	
	ambient	50°C	
explosion proof	E Ex e II T5	nominal voltage U _n	DC 24 V 3,25 W
		power consumption	AC 230 V 50 Hz 2,90 W

pneumatic specifications

options

actuation pressure range	bar	4-10
air consumption	cm³/stroke	7
cycle speed		main valve speed variable by throttleson pilot valve
control		preferably 5/2 way pilot valve
pilot valve interface		
actuator ports	2/4	G 1/8

hydraulic specifications

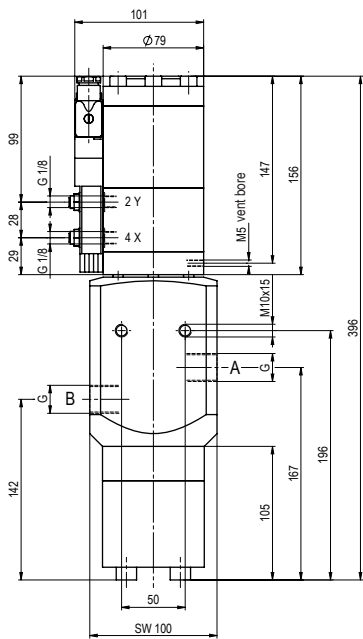
options

actuation pressure range		
control		
actuator ports		
by media		

■ specifications not highlighted are standard
 ■ specifications highlighted in grey are optional

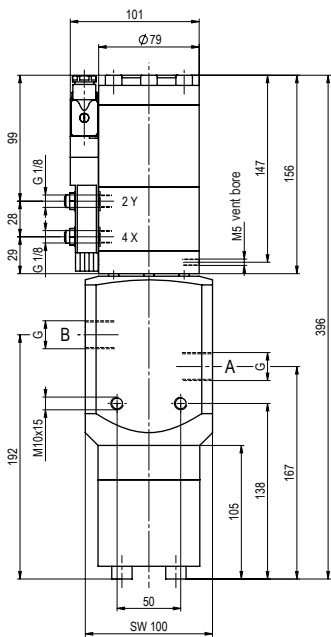
type **PCD-H 15**

function: **NC**
closed when not energized

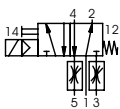


type **PCD-H 15**

function: **NO**
open when not energized



pneumatic actuation



5/2 way pilot valve
flow rate 350 l/min
pressure range 3-10 bar G 1/8