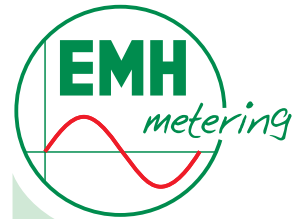
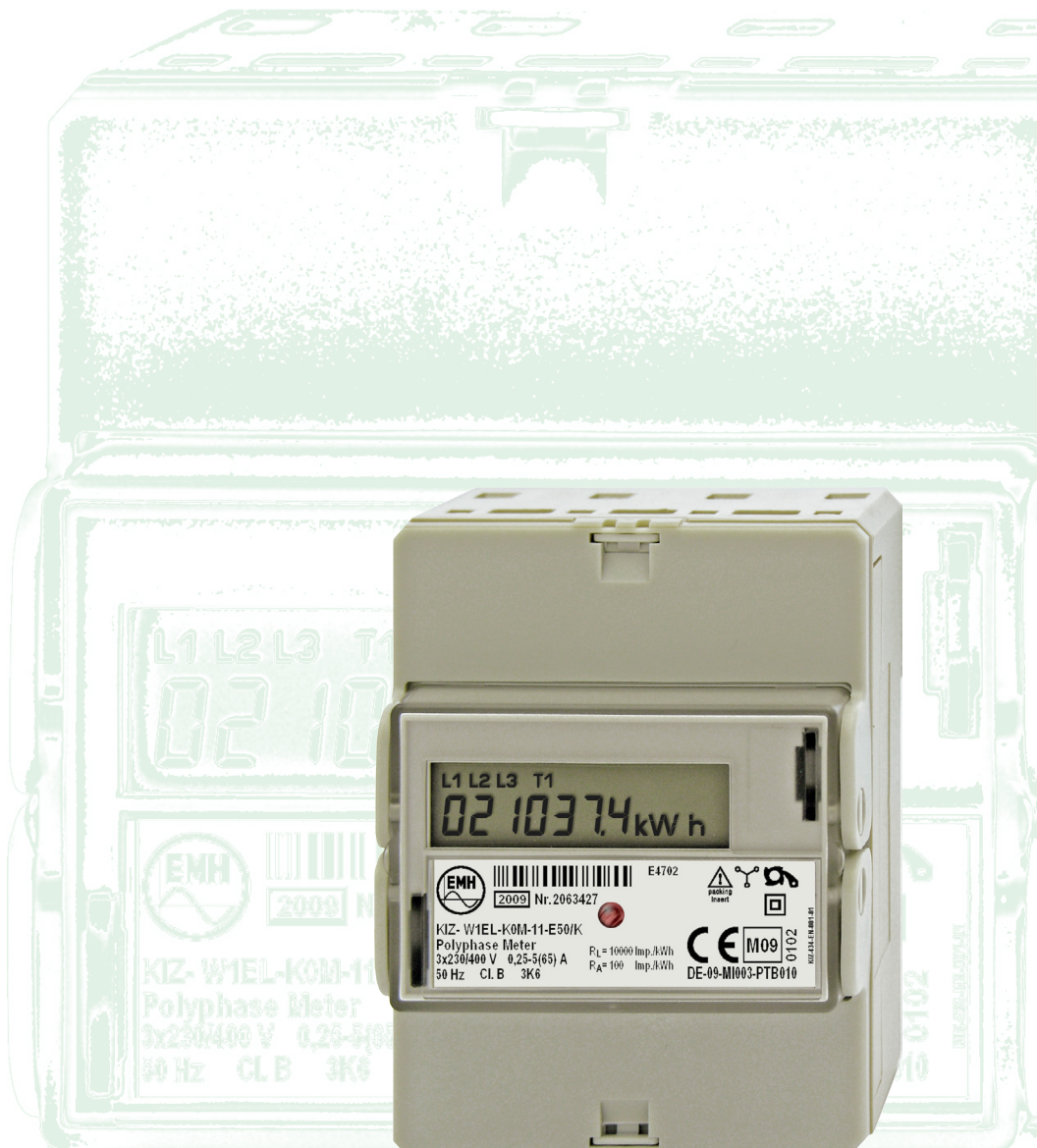


# KIZ



- ✓ For industrial applications and billing purposes
- ✓ Compact design, only 4 pitch wide
- ✓ DIN-Rail mounting acc. to IEC 60715
- ✓ Up to 2 tariffs
- ✓ Bus capable: M-Bus-interface
- ✓ Impulse output S0
- ✓ LC-display with 7 digits
- ✓ Measuring of instantaneous values
- ✓ With **EC type-examination certificate** acc. to directive 2004/22/EC (MID = **M**easuring **I**nstrument **D**irective)



**EMH metering**  
GmbH & Co. KG

Neu-Galliner Weg 1  
19258 Gallin  
GERMANY

Tel. +49 38851 326-0  
Fax +49 38851 326-1129

E-mail [info@emh-metering.com](mailto:info@emh-metering.com)  
Web [www.emh-metering.com](http://www.emh-metering.com)

**EN** Edition: 02.03.2012  
KIZ-DAB-E-1.40

## Compact Industry Meter - KIZ

<b>Voltage</b>	4-wire meter 2-wire meter	3 x 230/400 V 230 V
<b>Current</b>		0,25 - 5(65) A or 0,5 - 10(65) A
<b>Starting current</b>		20 mA
<b>Frequency</b>		50 Hz
<b>Accuracy</b>	active energy	Cl. B acc. to EN 50470-1, -3
<b>Measuring types</b>	active energy	+A (with non-reverse ratchet)
<b>Meter constants</b>	LED output	10 000 Imp./kWh 100 Imp./kWh
<b>Energy registers</b>	number	max. 2 tariff registers (T1 / T2)
<b>Control input for tariff switching (optional)</b>	number system voltage	max. 1 230 V AC
<b>Data retention time</b>		without voltage in the EEPROM, at least 20 years
<b>Display</b>	version number of digits digitness digit size in the value range	LCD 7 6,1 approx. 5,8 x 3,5 (H x W) mm
<b>Data interface (optional)</b>	M-Bus	acc. to DIN EN 13757-2, -3 (300...9600 baud)
<b>Output (optional)</b>	number S0-output pulse length	1 max. 27 V DC, 27 mA (passive) 100 ms
<b>Energy supply</b>	switched-mode power supply	3-phase from the measuring voltage
<b>Power consumption per phase</b>	voltage path current path	< 0,55 VA / < 0,4 W < 0,01 VA
<b>EMC-characteristics</b>	isolation resistance surge voltage  resistance against HF-fields	isolation: 4 kV AC, 50 Hz, 1 min EMC: 4 kV, impulse 1,2/50 µs, 2 Ω, ISO: 6 kV, impulse 1,2/50 µs, 500 Ω 10 V/m (under load)
<b>Temperature range</b>	specified operating range limit range for operation, storage and transport	-25 °C...+55 °C  -40 °C...+70 °C
<b>Relative humidity</b>		max. 95 %, non-condensing, acc. to IEC 62052-11, EN 50470-1 and IEC 60068-2-30
<b>Housing</b>	dimensions class of protection degree of protection housing degree of protection terminals material fire characteristics	4 TE = 72 x 90 x 61 (W x H x D) mm II IP 20 IP 20 polycarbonate glass-fibre reinforced, without halogen, recyclable acc. to IEC 62052-11
<b>Environmental conditions</b>	mechanical electromagnetic planned site of installation	M1 acc. to Measuring Instruments Directive E2 acc. to Measuring Instruments Directive indoor acc. to EN 50470-1
<b>Weight</b>		approx. 350 g
<b>Connection cross-section</b>	current- / neutral terminals voltage- / auxiliary terminals	max. 16 mm <sup>2</sup> max. 2,5 mm <sup>2</sup>
<b>Further features</b>	measuring of instantaneous values	power, voltage, current

Product specifications are subject to change without notice!

