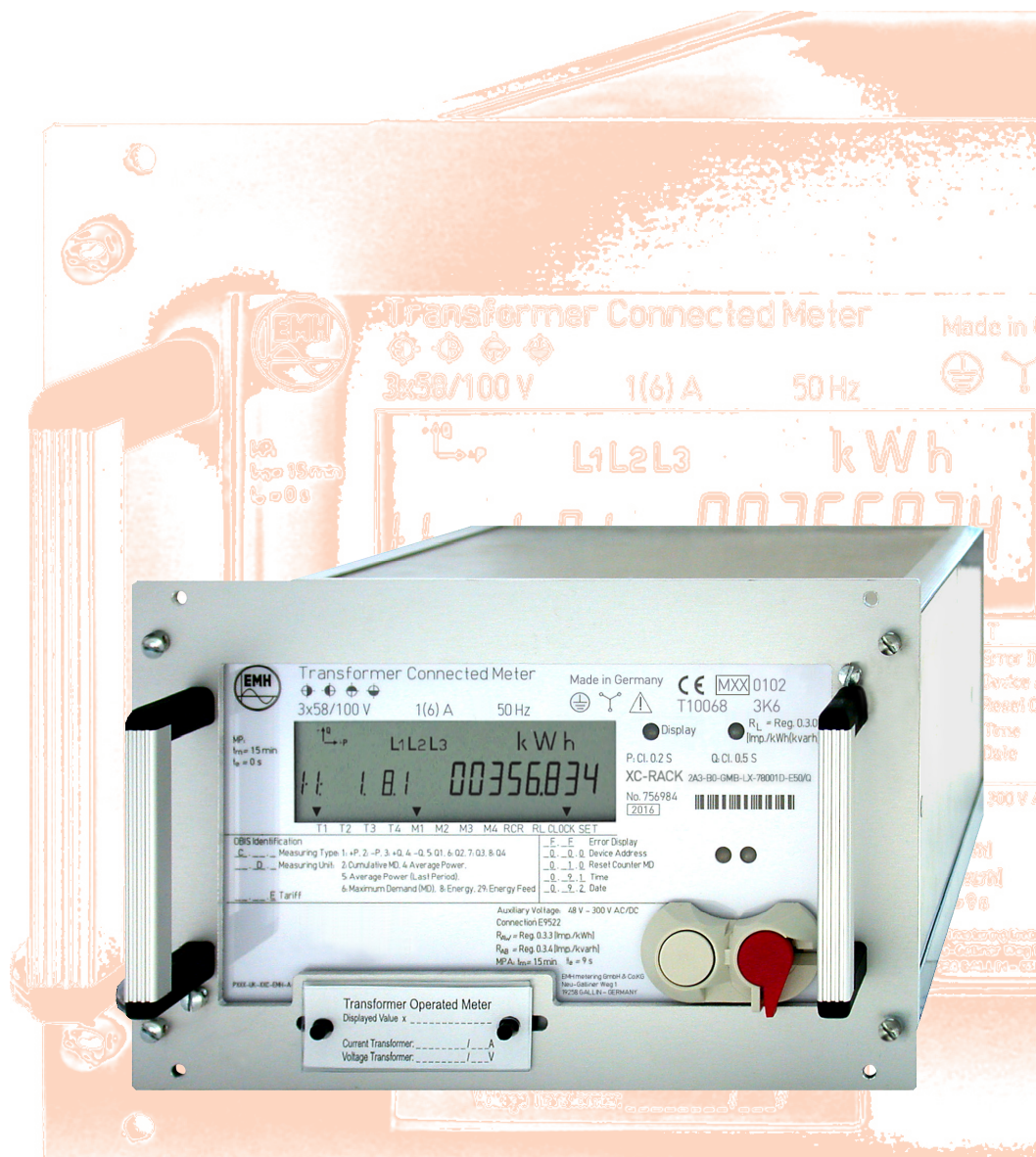


XC-RACK Generation E

- ✓ Precision meter for 19" module carrier
- ✓ Measuring accuracy in Cl. 0,2 S and Cl. 0,5 S
- ✓ Ethernet interface
- ✓ Extended PQ measurements (harmonics, THD, flicker)
- ✓ Auxiliary voltage supply 48-300 V AC/DC



EMH metering

GmbH & Co. KG

Neu-Galliner Weg 1

19258 Gallin

GERMANY

Tel. +49 38851 326-0

Fax +49 38851 326-1129

E-mail info@emh-metering.com

Web www.emh-metering.com



Edition: 27.06.2018
XC-RACK-DAB-E-1.20

Precision meter for 19" module carrier - XC-RACK generation E

Voltage	4-wire meter 3-wire meter 2-wire meter	3 x 58/100 V, 3 x 63/110 V, 3 x 115/200 V, 3 x 127/220 V, 3 x 132/230 V, 3 x 230/400 V, 3 x 58/100 V - 240/415 V 3 x 100 V, 3 x 110 V 100 V
Current		1 A, 1(2) A, 1(6) A, 5 A
Frequency		50 Hz, 16.7 Hz
Accuracy	active energy reactive energy	Cl. 0.2 S, Cl. 0.5 S Cl. 0.5 S, Cl. 1 S
Measuring system	designation	compensated current transformer
Measuring types	active energy reactive energy others	+A, -A +R, -R, R ₁ , R ₂ , R ₃ , R ₄ S, Ah, U ² h, I ² h
Meter constants	LED (Imp./kWh[kvarh]) output (Imp./kWh[kvarh]) configuration ability	10 000 - 100 000 (depending on meter type) 5 000 - 50 000 (depending on meter type) after certification by means of the certification relevant logbook
Energy registers	maximum number	32 tariff registers + 16 tariff-less registers, each with 15 historical values
Maximum registers	maximum number measuring period	32 tariff registers, each with 15 historical values 2, 5, 10, 15, 30, 60 min, adjustable
Load profile	maximum number of channels memory depth at 1 channel registering period registering type	32 up to 3 years with a registering period of 15 min 1, 5, 10, 15, 30, 60 min, adjustable power, energy, energy feed
Real Time Clock	accuracy synchronisation running reserve battery	within ± 5 ppm via data interface, control input or DCF-module > 20 years
Control inputs	S0-input low voltage or system voltage	maximum number: 1, max. 27 V DC, 27 mA maximum number: 8, 18...40 V DC maximum number 8, 58...240V
Data retention time		without voltage in the EEPROM, at least 10 years
Display	version height of digits in the value range	VDEW-display, 84 x 24 mm 8 mm
Operation	mechanical buttons optical sensor	for operation of display and reset (sealable) for operation of display
Data interfaces	optical data interface electrical data interface Ethernet interface	D0, 9600 baud RS485, 19200 baud (fixed or Mode C/E) IEEE 802.3 10BaseT/100BaseTx IP address allocation mode: DHCP or fixed IP-address data transmission: TCP/IP Server, FTP, IPT, SMTP (Mail) IEC 62056-21 or DLMS
Outputs	data protocols maximum number Opto-MOSFET	8 max. 250 V AC/DC, 100 mA (make contact)
Energy supply	switched-mode power supply mains buffering time	3-phase > 500 ms
Auxiliary voltage	wide range	48...300 V AC/DC
Power consumption per phase	voltage path with auxiliary voltage voltage path without auxiliary voltage current path auxiliary voltage	< 0,4 VA/< 0,2 W < 2,7 VA/< 1,6 W < 0,008 VA < 9 VA/< 4,8 W
EMC-characteristics	isolation resistance surge voltage	4 kV AC, 50 Hz, 1 min 8 kV, impulse 1,2/50 µs, 2 Ω (measuring path, auxiliary voltage) 6 kV, impulse 1,2/50 µs, 500 Ω (outputs)
Temperature range	resistance against HF-fields specified operating range limit range for operation, storage and transport	10 V/m (under load) -25 °C...+55 °C -40 °C...+70 °C
Relative humidity		max. 95 %, non-condensing
Housing	dimensions: housing with terminals class of protection degree of protection: housing degree of protection: terminals housing material	approx. 200 x 112 x 264 (W x H x D) mm, acc. to DIN 43862 I IP 50 IP 20 aluminium alloy, polycarbonate, without halogen
Environmental conditions	mechanical electromagnetic intended location	M1 acc. to Measuring Instruments Directive (2014/32/EU) E2 acc. to Measuring Instruments Directive (2014/32/EU) indoor acc. to EN 50470-1
Weight		approx. 2,3 kg
Terminals		ESSAILEC-plug-in system or Phoenix screw-type terminals
Further features	measuring of instantaneous values installation check optical fibre interface	P, Q, S (per phase and sum), U, I, power factor (per phase), line frequency, phase failures via instantaneous values (service data) possible for connection of up to 4 optical fibre separation boxes

Product specifications are subject to change without notice!

