

Modules



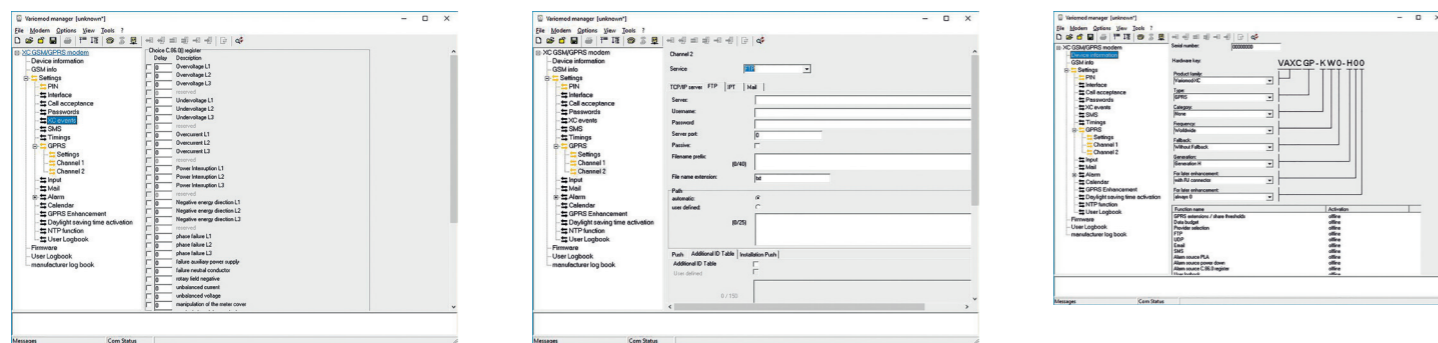
The modem module VARIOMOD XC is available as a LTE-, GPRS-, and Ethernet module. Across the possibility of transparent data reading, the modem modules are suitable for all common control centers.

The modem modules are equipped with an additional RS485 interface to connect more devices.

COMMUNICATION MODULES

- FOR INSTALLATION IN THE DMTZ-XC / LZQJ-XC
- SOLUTION FOR REMOTE METER READING UND DATA TRANSMISSION
- HIGH RANGE OF FUNCTIONS AND EASY CONFIGURATION

CONFIGURATION SOFTWARE:



ACCESSORIES/ANTENNAS:



Multiband antenna



Magnetic base antenna

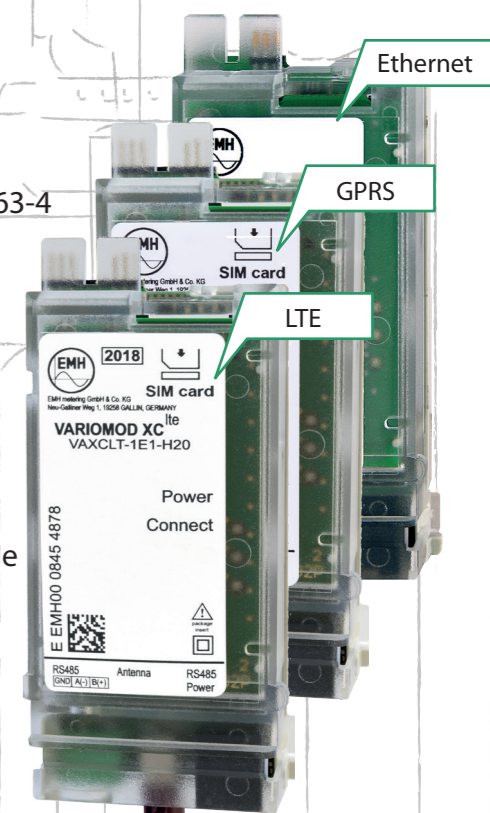


FAKRA FME-plug



VARIOMOD XC

- Transparent data readout, suitable for all common control centres
- Supports national roaming
- IP-Telemetry in accordance with DIN 43463-4
- Extensive push functions
- Password protection (readout and/or remote configuration)
- Meter-, mobile network- and data volume monitoring
- Additional RS485 interface
- Interchangeable in meter operation
- Remote update and configuration possible



Interface Modul XC

- Interface extension for the LZQJ-XC
- RS485- and RS232 interface
- Interchangeable in meter operation



Product specifications are subject to change without notice!

Variants		GPRS/LTE	GPRS	Ethernet	Analog	Interface Modul
		VARIOMOD XC ^{lte}	VARIOMOD XC ^{gprs}	VARIOMOD XC ^{ethernet}	VARIOMOD XC ^{analog}	Interface Module XC
Supply		from the LZQJ-XC (optionally with external plug-in power supply)	from the LZQJ-XC (optionally with external plug-in power supply)	from the LZQJ-XC (optionally with external plug-in power supply)	from the LZQJ-XC (optionally with external plug-in power supply)	from the LZQJ-XC (optionally with external plug-in power supply)
Displays		3 LEDs	3 LEDs	3 LEDs	3 LEDs	---
Data interfaces	electrical data interface data protocols transmission rates	RS485 IEC 62056-21 (7E1), DLMS (8N1), Mode C, Mode E, transparent 300 up to 19200 baud	RS485 IEC 62056-21 (7E1), DLMS (8N1), Mode C, Mode E, transparent 300 up to 19200 baud	RS485 IEC 62056-21 (7E1), DLMS (8N1), Mode C, Mode E, transparent 300 up to 19200 baud	RS485 IEC 62056-21 (7E1), DLMS (8N1), Mode C, Mode E, transparent 300 up to 19200 baud	RS485 and RS232 IEC 62056-21 (7E1), DLMS (8N1), Mode C, Mode E, transparent 300 up to 19200 baud
Safety/EMC	safety noise immunity radio disturbance	EN 301489-1, EN 301489-52 EN 301489-1, EN 301489-52	EN 301489-1, EN 301489-7 EN 301489-1, EN 301489-7	EN 60950-1 EN 55024 EN 55032	EN 60950-1 EN 55024 EN 55032	EN 60950-1 EN 55024 EN 55032
Temperature range	specified operating range limit range for operation, storage and transport	-20°C...+55°C -40°C...+80°C	-20°C...+55°C -40°C...+80°C	-25°C...+55°C -40°C...+80°C	-25°C...+55°C -40°C...+80°C	-25°C...+55°C -40°C...+80°C
Relative humidity		max. 95%, non-condensing	max. 95%, non-condensing	max. 95%, non-condensing	max. 95%, non-condensing	max. 95%, non-condensing
Housing	dimensions mounting degree of protection	approx. 45 x 105/115 x 27 (B x H x T) mm plug-in into module compartment of LZQJ-XC IP 20	approx. 45 x 105/115 x 27 (B x H x T) mm plug-in into module compartment of LZQJ-XC IP 20	approx. 45 x 105 x 27 (B x H x T) mm plug-in into module compartment of LZQJ-XC IP 20	approx. 45 x 105 x 27 (B x H x T) mm plug-in into module compartment of LZQJ-XC IP 20	approx. 45 x 105 x 27 (B x H x T) mm plug-in into module compartment of LZQJ-XC IP 20
Weight		approx. 90 g	approx. 75 g	approx. 65 g	approx. 60 g	approx. 60 g
Terminals	RS485 RS232 telephone connection antenna connection network connection external supply unit RS485 with spring terminal block (accessories)	1 x RJ12 modular sockets (6P6C), 1 x socket for 1,5 mm ² spring terminal, looped trough --- FAKRA-plug --- 12 - 18 V DC RS485 plug RS485 (RJ12)/ external supply unit RS485 socket with spring terminals	1 x RJ12 modular sockets (6P6C), 1 x socket for 1,5 mm ² spring terminal, looped trough --- FAKRA-plug --- 12 - 18 V DC RS485 plug RS485 (RJ12)/ external supply unit RS485 socket with spring terminals	2x RJ12 modular sockets (6P6C), looped trough --- --- --- Ethernet: RJ45 modular socket (8P8C) 12 - 18 V DC Ethernet (RJ45) RS485 (RJ12) RS485 (RJ12)/ external supply unit Ethernet (RJ45) RS485	2x RJ12 modular sockets (6P6C), looped trough --- PSTN: RJ12 modular socket (6P6C) --- --- 12 - 18 V DC PSTN (RJ12) RS485 (RJ12) RS485 (RJ12)/ external supply unit PSTN (RJ12) RS485	2x RJ12 modular sockets (6P6C), looped trough RJ12 modular socket (6P6C) --- --- 12 - 18 V DC RS232 (RJ12) RS485 (RJ12) RS485 (RJ12)/ external supply unit RS232 and RS485
Functions	call acceptance password protection configuration + firmware update operation safety	via time slots and white list 1...15 radio call sign (configurable) 2 independent password levels: configuration and transparent mode via GSM/GPRS/LTE or locally via electrical data interfaces integrated watchdog, automatic reset (configurable)	--- 2 independent password levels: configuration and transparent mode via GPRS or locally via electrical data interfaces integrated watchdog, automatic reset (configurable)	--- 2 independent password levels: configuration and transparent mode via Ethernet or locally via electrical data interfaces integrated watchdog, automatic reset (configurable)	via time slots 1...15 radio call sign (configurable) 2 independent password levels: configuration and transparent mode via telephone network or locally via electrical data interfaces integrated watchdog, automatic reset (configurable)	--- --- --- ---
GSM	frequency band (channel) transmission power connection protocol compression error correction	900 (B8) / 1800 (B3) MHz max. 2 W with 900 MHz max. 1 W with 1800 MHz V.21, V.22, V.23, V.22 up to V.26ter, V.32, V.34, V.110 V.42 up to MNP2	quad band 850 / 900 / 1800 / 1900 MHz max. 2 W with 850 / 900 MHz max. 1 W with 1800 / 1900 MHz --- ---	--- --- --- ---	--- --- --- ---	--- --- --- ---
GPRS	class	class 10 up to 2 uplinks, up to 4 downlinks; max. 5 links	class 10 up to 2 uplinks, up to 4 downlinks; max. 5 links	---	---	---
LTE	type frequency band (channel)	LTE Cat.1 (10 Mbit/s down-, 5Mbit/s uplink) 800 (B20) / 900 (B8) / 1800 (B3) MHz	---	---	---	---
Network	Ethernet IP address allocation mode protocol	---	---	IEEE 802.3 10BaseT/100BaseTx autonegotiation, Auto-MDI(X) DHCP or fixed IP-adress TCP/IP Server, FTP, IPT, UDP, SMS	---	---
Scope of delivery	software documents	Variomod Manager Instructions for use	Variomod Manager Instructions for use	Variomod Manager Instructions for use	Variomod Manager Instructions for use	---
Accessory		multi band antenna 3m cable length, plug for 1,5 mm ² (RS485), adapter: FAKRA-FME, FAKRA-SMA, RJ12 connection cable, RJ12 cable with open ended cable	magnetic base antenna 2,5 m cable length, multi band antenna 3m cable length, plug for 1,5 mm ² (RS485), adapter: FAKRA-FME, FAKRA-SMA, RJ12 connection cable, RJ12 cable with open ended cable	RJ12 connection cable, RJ12 cable with open ended cable	TAE-N plug 3 m cable length, RJ12 connection cable, RJ12 cable with open ended cable	RJ12 connection cable, RJ12 cable with open ended cable
Device type		only valid for LTE: VAXC LT-1E1-H20	only valid for GPRS generation H: VAXC GP-KWO-H20	only valid for ethernet: VAXC ET-E10	only valid for analog: VAXC AN-E00	only valid for interface module: IMXCRS-E00