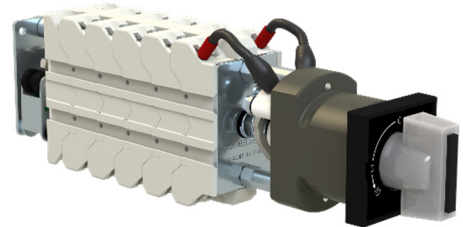


Series:	DR8
Model:	DR802
MECHANICAL FEATURES	
CONTACTS	
Stationary Contacts:	Brass
Rotor Contacts:	Phosphor Bronze Alloy Wiping Knife type Contacts
Superficial Treatments:	Silver Coated /Gold Coated
INSULATING ELEMENTS (Packets)	
Material:	Nylon PA66 45% FG Reinforced
Comparative Tracking Index (CTI)	600V
Pollution Degree:	PLDG2
POSSIBLE MANUFACTURING NUMBER OF POSITIONS/ELEMENTS	
Number of Positions:	2 to 4 Turn-Push-Turn Stayput or Spring Return
Number of Decks:	1 to 8

**PROTECTION DEGREE (IEC 60529)**

Frontal Part:	IP40
Active Parts:	IP20

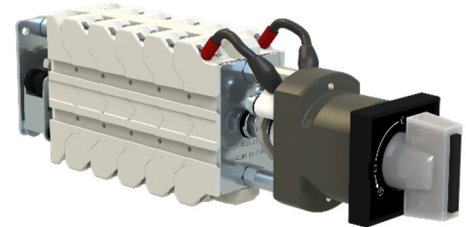
OTHER MECHANICAL CHARACTERISTICS

Shaft:	Steel 5mm Square
Notching Mechanisme:	Roller Type
Springs:	Stainless Stees
Escutcheon Plate:	30x30mm Square Ø30mm Round
Handles:	Translucent Black
Lamp Holder:	Nylon 60% FG Reinforced
Illumination:	LED Bulb BA7S (24V-48V-110V-130V-220V AC/DC) –with Test Lamp Terminal And Block Diode

According to IEC 60947-3 – EN60947-3

RATED ELECTRICAL CHARACTERISTICS

Conventional free air thermal current	(Ith)	20A
Rated Insulation Voltage	(Ui)	690V
Rated Impulse withstand Voltage	(Uimp)	4Kv
Dielectric test Voltage corresponding to the rated insulation Voltage		2500V/60s (50Hz)
Frequency		50/60Hz



RELEVANT INFORMATIONS ABOUT THE ASSOCIATED SHORT CIRCUIT PROTECTIVE DEVICE

Conditional Short-Circuit current		1000A
Fuse Type		20A-400V
Rated Short Time Current (1s)	(Icw)	60A
Contact Resistance		5Ω

MAKING AND BREAKING CAPACITIES

Utilization Category	(Ue)	(Ie)
AC14	400V	10A
AC15	400V	6A
DC13 (L/R=50ms)	220V	1,5A
	110V	3A
DC13 (L/R=1ms)	220V	3A
DC14	110V	3,5A
	250V	1,5A



Recommended tightening Torque to avoid Tread Stripping.
Don't Exceed Torque more than Indicated

Connecting Screw:		M3
Tightening Torque:	Nm	1,2

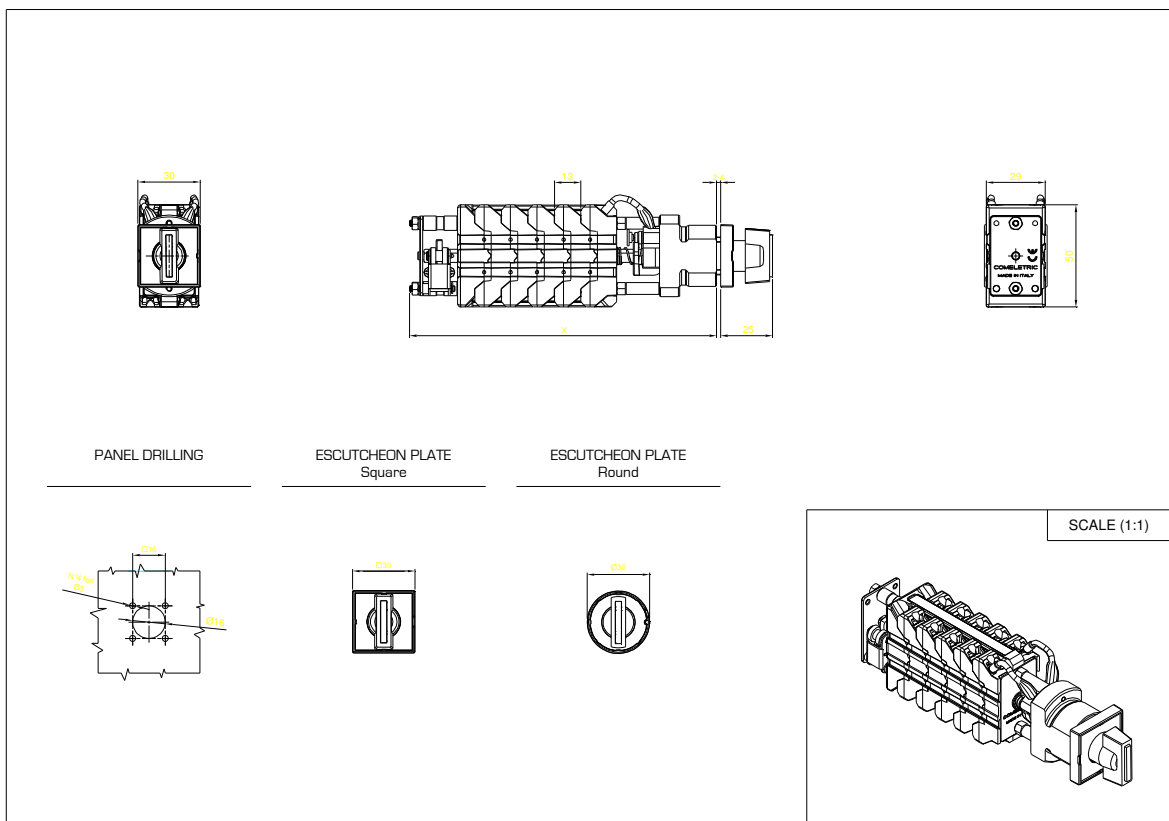
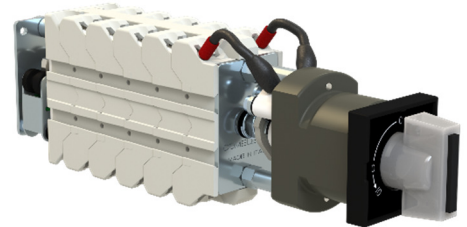
MAX PERMISSIBLE WIRE GAGE

Single core or Stranded Wire:	mm ²	2x2,5 AWG13
Flexible Wire:	mm ²	2x2,5 AWG13
Cable Termination:		Forks Pins Tubes

ENVIRONMENTAL DATA (IEC60947-1)

TEMPERATURE RANGE

Operating Temperatures:	-25°C + 60°C
Storage Temperatures:	-40°C + 80°C



N° of Decks	1	2	3	4	5	6	7	8
Length (mm)	126	139	152	165	178	191	204	217